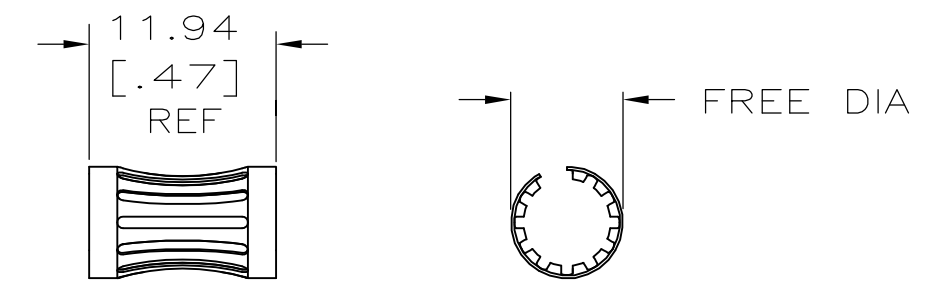
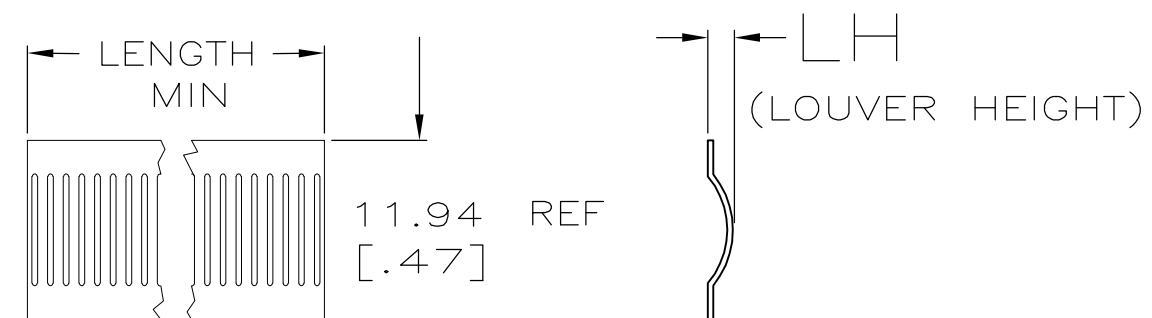


THIS DRAWING IS UNPUBLISHED. RELEASED FOR PUBLICATION .19
 © COPYRIGHT 19 BY AMP INCORPORATED. ALL INTERNATIONAL RIGHTS RESERVED.

LOC	DIST	P	F	REVISIONS				
				ZONE	LTR	DESCRIPTION	DATE	APPD
FT	0				G	REVISE PER ECN 0G3B-0319-00	14JUL00	SU/GS
					H	REV PER EC 0G3B-0351-01	18JAN02	GS
					III	REVISED PER ECO-09-020935	08SEP09	AEG

STYLE	FREE DIA	LH	LENGTH	MAT'L (NOTE)	MATING PIN Ø REF	PLATING NOTE NO.	NUM LOUV	MAT'L THK	REF	PART NO.	
A	.34	.043	--	12	6.35 [.250]	UNPL	18	0.15 [.006]	03142	5-192038-0	OBSOLETE ¹⁶
A	.34	.030	--	12	6.35 [.250]	3-2	18	0.15 [.006]	03028	4-192038-9	
A	.34	.030	--	12	6.35 [.250]	1-2	18	0.15 [.006]	03086	4-192038-8	
A	.34	.030	--	12	6.35 [.250]	UNPL	18	0.15 [.006]	03074	4-192038-7	OBSOLETE ¹⁶
A	--	--	--	12	6.30 [.248]	UNPL	19	0.30 [.012]	--	4-192038-6	OBSOLETE ¹⁵
A	--	--	--	12	6.30 [.248]	UNPL	19	0.28 [.011]	--	4-192038-5	OBSOLETE ¹⁵
A	.35	.034	--	12	6.30 [.248]	3-2	19	0.25 [.010]	03025	4-192038-4	
A	.35	.034	--	12	6.30 [.248]	1-2	19	0.25 [.010]	03147	4-192038-3	OBSOLETE ¹⁶
A	.35	.034	--	12	6.30 [.248]	UNPL	19	0.25 [.010]	03111	4-192038-2	OBSOLETE
A	.32	.038	--	12	6.00 [.236]	4-2	17	0.20 [.008]	03137	4-192038-1	
A	.32	.038	--	12	6.00 [.236]	3-2	17	0.20 [.008]	03023	4-192038-0	
A	.32	.038	--	12	6.00 [.236]	1-2	17	0.20 [.008]	03065	3-192038-9	OBSOLETE ¹⁶
A	.32	.034	--	12	6.00 [.236]	UNPL	17	0.20 [.008]	03061	3-192038-8	OBSOLETE
A	.33	.034	--	12	6.00 [.236]	3-2	17	0.15 [.006]	03022	3-192038-7	
A	.33	.034	--	12	6.00 [.236]	1-2	17	0.15 [.006]	03113	3-192038-6	OBSOLETE ¹⁶
A	.33	.034	--	12	6.00 [.236]	UNPL	17	0.15 [.006]	03021	3-192038-5	OBSOLETE
NOT AVAILABLE											
A	.35	.020	--	13	6.00 [.236]	--	17	0.12 [.005]	03085	3-192038-3	
NOT AVAILABLE											
A	.26	.034	--	12	5.00 [.197]	3-2	15	0.20 [.008]	03019	3-192038-1	OBSOLETE ¹⁶
A	.26	.034	--	12	5.00 [.197]	1-2	15	0.20 [.008]	03131	3-192038-0	OBSOLETE
A	.26	.034	--	12	5.00 [.197]	UNPL	15	0.20 [.008]	03130	2-192038-9	
A	.26	.031	--	12	5.00 [.197]	3-2	15	0.15 [.006]	03018	2-192038-8	
A	.26	.031	--	12	5.00 [.197]	1-2	15	0.15 [.006]	03064	2-192038-7	OBSOLETE ¹⁶
A	.26	.031	--	12	5.00 [.197]	5	15	0.15 [.006]	03103	2-192038-6	OBSOLETE
A	.26	.031	--	12	5.00 [.197]	UNPL	15	0.15 [.006]	03060	2-192038-5	OBSOLETE
A	.23	.034	--	12	4.00 [.157]	3-2	14	0.20 [.008]	03013	2-192038-4	
A	.23	.030	--	12	4.00 [.157]	3-2	14	0.15 [.006]	03012	2-192038-3	OBSOLETE ¹⁶
A	.21	.030	--	12	3.50 [.138]	3-2	13	0.15 [.006]	03011	2-192038-2	
A	.21	.034	--	12	3.17 [.125]	3-2	12	0.20 [.008]	03010	2-192038-1	OBSOLETE
A	.21	.034	--	12	3.17 [.125]	1-2	12	0.10 [.004]	03132	2-192038-0	
A	.21	.034	--	12	3.17 [.125]	5	12	0.10 [.004]	03133	1-192038-9	
A	.21	.034	--	12	3.17 [.125]	UNPL	12	0.10 [.004]	03134	1-192038-8	
A	.20	.030	--	12	3.00 [.118]	3-2	11	0.15 [.006]	03009	1-192038-7	
A	.19	.030	--	12	3.00 [.118]	3-2	10	0.15 [.006]	03008	1-192038-6	
A	.18	.030	--	12	2.67 [.105]	3-2	9	0.15 [.006]	03007	1-192038-5	
A	.18	.030	--	12	2.31 [.091]	3-2	8	0.15 [.006]	03006	1-192038-4	OBSOLETE ¹⁶
A	.15	.030	--	12	2.03 [.080]	3-2	7	0.15 [.006]	03005	1-192038-3	
A	.15	.030	--	12	1.70 [.067]	3-2	6	0.15 [.006]	03004	1-192038-2	
C	--	.038	NOTE 14	12	--	3-2	--	0.20 [.008]	03000	1-192038-1	OBSOLETE
C	--	.038	NOTE 14	12	--	1-2	--	0.20 [.008]	03095	1-192038-0	OBSOLETE
C	--	.038	NOTE 14	12	--	UNPL	--	0.20 [.008]	03077	192038-9	
C	--	.034	NOTE 14	12	--	4-2	--	0.15 [.006]	03123	192038-8	
C	--	.034	NOTE 14	12	--	3-2	--	0.15 [.006]	03053	192038-7	OBSOLETE
C	--	.034	NOTE 14	12	--	1-2	--	0.15 [.006]	03104	192038-6	
C	--	.034	NOTE 14	12	--	UNPL	--	0.15 [.006]	03001	192038-5	OBSOLETE ¹⁶
NOT AVAILABLE											
NOT AVAILABLE											
NOT AVAILABLE											
NOT AVAILABLE											



STYLE C (STRIP)

STYLE A (FEMALE)

1. FINISH-SILVER PLATE 200 μIN MIN THICK.
 2. FINISH-NICKEL PLATE 40 μIN MIN THICK.
 3. FINISH-GOLD PLATE 10 μIN MIN THICK.
 4. FINISH-GOLD PLATE 50 μIN MIN THICK.
 5. FINISH-NICKEL PLATE 80 μIN MIN THICK.
 6. FINISH-TIN PLATE 300 μIN MIN THICK.
 7. NOT USED.
 8. NOT USED.
 9. NOT USED.
 10. NOT USED.
 11. PLATING NOTE ARE TO BE INTERPRETED AS FOLLOWS, 6-8 AS 6 OVER 8.
 12. MATERIAL-CDA172, BeCu.
 13. MATERIAL-STAINLESS STEEL.
 14. PRODUCT IS SOLD BY THE FOOT.
- ¹⁵ OBSOLETE PART NUMBER.
¹⁶ OBSOLETE PARTS: OBSOLETE CIS STREAMLINING PER D.RENAUD/D.SINISI

STYLE	FREE DIA	LH	LENGTH	MAT'L (NOTE)	MATING PIN Ø REF	PLATING NOTE NO.	NUM LOUV	MAT'L THK	REF	PART NO.
-------	----------	----	--------	--------------	------------------	------------------	----------	-----------	-----	----------

DO NOT SCALE PRINT. UNLESS SPECIFIED DIMENSIONS IN mm [INCHES] TOLERANCES ON :		DR RA JAYNE 08-13-91		AMP Incorporated Harrisburg, PA 17105-3608	
1 PLC DEC ± 0.5 [.02] 2 PLC DEC ± 0.25 [.010] ANGLES ± -		CHK RA JAYNE 08-13-91			
MATERIAL		APPD RA JAYNE 08-13-91		NAME	
SEE TABLE		APPD RA JAYNE 08-13-91		CONTACT BAND, FEMALE	
FINISH		APPLICATION SPEC		SIZE	
SEE TABLE		-		C 00779	
WEIGHT		-		DRAWING NO	
-		-		192038	
		SCALE NTS		SHEET 1 OF 2	

THIS DRAWING IS UNPUBLISHED. RELEASED FOR PUBLICATION
 © COPYRIGHT 19 BY AMP INCORPORATED. ALL INTERNATIONAL RIGHTS RESERVED.

LOC	DIST	P	F	ZONE	LTR	REVISIONS	DATE	APPD
FT	0					DESCRIPTION		
					-	SEE SHEET ONE	-	-


STYLE	FREE DIA	LH	LENGTH	MAT'L (NOTE)	MATING PIN Ø REF	PLATING NOTE NO.	NUM LOUV	MAT'L THK	REF	PART NUMBER			
A	[.100]	.034	--	12	17.98	[.708]	1-2	53	0.20	[.008]	03114	9-192038-9	
A	[.90]	.038	--	12	16.00	[.630]	1-2	46	0.20	[.008]	03107	9-192038-8	△16
A	[.90]	.038	--	12	16.00	[.630]	UNPL	46	0.20	[.008]	03146	9-192038-7	
A	[.80]	.034	--	12	14.00	[.551]	3-2	42	0.20	[.008]	--	9-192038-6	OBSOLETE
A	[.62]	.034	--	12	12.70	[.500]	1-2	38	0.20	[.008]	03097	9-192038-5	OBSOLETE
A	[.62]	.034	--	12	12.70	[.500]	6	38	0.20	[.008]	03090	9-192038-4	
A	[.62]	.034	--	12	12.70	[.500]	UNPL	38	0.20	[.008]	03099	9-192038-3	OBSOLETE △16
A	--	--	--	12	12.70	[.500]	3-2	37	0.20	[.008]	03047	9-192038-2	△16
A	--	--	--	12	12.70	[.500]	1-2	37	0.20	[.008]	03068	9-192038-1	△16
A	--	--	--	12	12.70	[.500]	UNPL	--	0.20	[.008]	03059	9-192038-0	△16
A	[.62]	.030	--	12	12.70	[.500]	1-2	36	0.15	[.006]	03117	8-192038-9	△16
A	[.62]	.020	--	13	12.70	[.500]	UNPL	37	0.12	[.005]	03092	8-192038-8	
A	[.62]	.034	--	12	11.99	[.472]	3-2	36	0.20	[.008]	--	8-192038-7	OBSOLETE
A	[.62]	.034	--	12	11.99	[.472]	1-2	36	0.20	[.008]	03108	8-192038-6	
A	[.62]	.034	--	12	11.99	[.472]	UNPL	36	0.20	[.008]	03135	8-192038-5	
A	[.60]	.034	--	12	11.10	[.437]	3-2	34	0.20	[.008]	03045	8-192038-4	△16
A	[.60]	.034	--	12	11.10	[.437]	1-2	34	0.20	[.008]	03106	8-192038-3	OBSOLETE
A	[.60]	.034	--	12	11.10	[.437]	UNPL	34	0.20	[.008]	03081	8-192038-2	
A	[.58]	.034	--	12	11.10	[.437]	1-2	32	0.20	[.008]	03102	8-192038-1	
A	[.58]	.034	--	12	11.10	[.437]	UNPL	32	0.20	[.008]	03109	8-192038-0	△16
A	[.58]	.020	--	13	11.10	[.437]	UNPL	32	0.12	[.005]	03118	7-192038-9	OBSOLETE
A	[.60]	.034	--	12	10.79	[.425]	4-2	34	0.20	[.008]	03105	7-192038-8	
A	[.55]	.038	--	12	10.00	[.394]	1-2	30	0.20	[.008]	03069	7-192038-7	
A	[.55]	.038	--	12	10.00	[.394]	UNPL	30	0.20	[.008]	03072	7-192038-6	OBSOLETE △16
A	--	--	--	12	10.00	[.394]	3-2	30	0.15	[.006]	03044	7-192038-5	△16
A	[.50]	.034	--	12	9.52	[.375]	3-2	27	0.20	[.008]	03093	7-192038-4	OBSOLETE
A	[.50]	.034	--	12	9.52	[.375]	1-2	27	0.20	[.008]	03089	7-192038-3	△16
A	[.50]	.034	--	12	8.89	[.350]	UNPL	28	0.20	[.008]	03112	7-192038-2	OBSOLETE △16
A	--	--	--	12	8.00	[.315]	3-2	--	0.12	[.005]	03043	7-192038-1	△16
A	--	--	--	12	8.00	[.315]	3-2	--	0.20	[.008]	03040	7-192038-0	△16
A	--	--	--	12	8.00	[.315]	1-2	--	0.20	[.008]	03098	6-192038-9	△16
A	--	--	--	12	8.00	[.315]	1-2	--	0.20	[.008]	03070	6-192038-8	△16
A	--	--	--	12	8.00	[.315]	UNPL	--	0.20	[.008]	03039	6-192038-7	△16
A	[.42]	.034	--	12	8.00	[.315]	3-2	22	0.20	[.008]	03141	6-192038-6	
A	[.42]	.034	--	12	8.00	[.315]	1-2	22	0.20	[.008]	03101	6-192038-5	
A	[.42]	.034	--	12	8.00	[.315]	UNPL	22	0.20	[.008]	03100	6-192038-4	OBSOLETE △16
A	--	--	--	12	6.60	[.260]	3-2	--	0.15	[.006]	03038	6-192038-3	△16
A	--	--	--	12	6.35	[.250]	UNPL	--	0.15	[.006]	03037	6-192038-2	△16
A	[.32]	.036	--	12	7.11	[.280]	3-2	20	0.20	[.008]	03033	6-192038-1	
A	[.32]	.036	--	12	7.11	[.280]	1-2	20	0.20	[.008]	03063	6-192038-0	
A	[.32]	.036	--	12	7.11	[.280]	UNPL	20	0.20	[.008]	03076	5-192038-9	△16
A	[.32]	.020	--	13	7.11	[.280]	UNPL	20	0.20	[.008]	03083	5-192038-8	OBSOLETE
A	--	--	--	12	6.60	[.260]	3-2	19	0.20	[.008]	03032	5-192038-7	△16
A	--	--	--	12	6.35	[.250]	UNPL	18	0.20	[.008]	03031	5-192038-6	△16
A	[.35]	.034	--	12	6.35	[.250]	UNPL	19	0.20	[.008]	03136	5-192038-5	OBSOLETE △16
A	[.31]	.034	--	12	6.35	[.250]	3-2	18	0.20	[.008]	03029	5-192038-4	
A	[.31]	.034	--	12	6.35	[.250]	1-2	18	0.20	[.008]	03075	5-192038-3	△16
A	[.31]	.034	--	12	6.35	[.250]	UNPL	18	0.20	[.008]	03062	5-192038-2	OBSOLETE
A	[.35]	.043	--	12	6.35	[.250]	1-2	18	0.15	[.006]	03143	5-192038-1	OBSOLETE

STYLE	FREE DIA	LH	LENGTH	MAT'L (NOTE)	MATING PIN Ø REF	PLATING NOTE NO.	NUM LOUV	MAT'L THK	REF	PART NUMBER
-------	----------	----	--------	--------------	------------------	------------------	----------	-----------	-----	-------------

DO NOT SCALE PRINT. UNLESS SPECIFIED DIMENSIONS IN mm [INCHES] TOLERANCES ON :
 1 PLC DEC ± 0.5 [.02]
 2 PLC DEC ± 0.25 [.010]
 ANGLES ± -

MATERIAL: SEE TABLE

FINISH: SEE TABLE

DR RA JAYNE 08-13-91	 AMP Incorporated Harrisburg, PA 17105-3608
CHK RA JAYNE 08-13-91	
APPD RA JAYNE 08-13-91	NAME
APPD RA JAYNE 08-13-91	CONTACT BAND, FEMALE
PRODUCT SPEC	
APPLICATION SPEC	SIZE
	CAGE CODE
	DRAWING NO
WEIGHT	SCALE
	SHEET